



BERRIKUNTZA SOZIOSANITARIOAKO EUSKAL FUNDAZIOA
FUNDACIÓN VASCA PARA LA INNOVACIÓN SOCIO SANITARIA

The Basque Model of Social and Health Care

Fernando Fantova
Director
Etorbizi



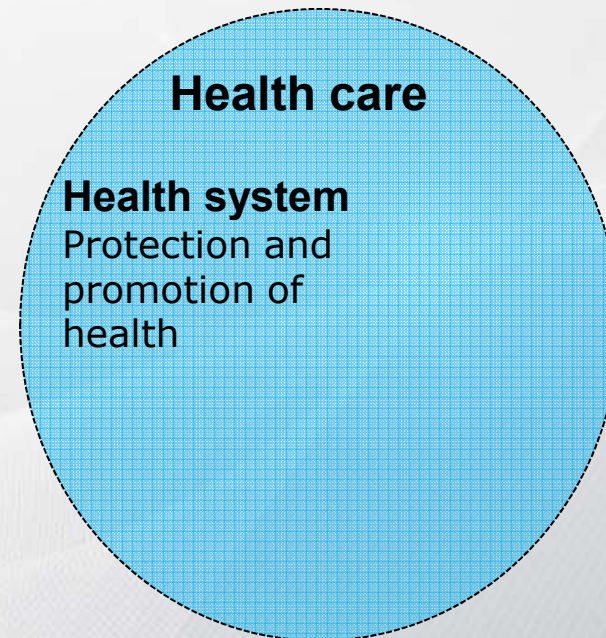
0. Content

- 1. Why Coordinated or Integrated Social and Health Care?**
- 2. The Basque Model of Coordinated or Integrated Social and Health Care: Key Characteristics**
- 3. Governance and Organisation of Coordinated or Integrated Health and Social Care**
- 4. Coordinated or Integrated Social and Health Care: Case Studies and Management**
- 5. Innovation for Social and Health Care: Etorbizi**
- 6. Future Perspectives**

1. Why Coordinated or Integrated Social and Health Care?

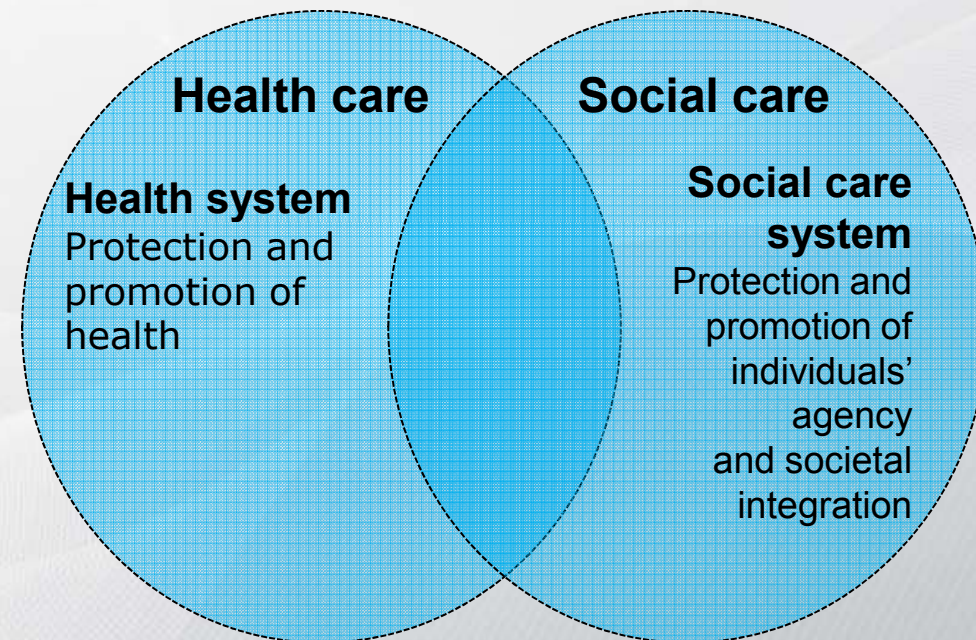
1. Why Coordinated or Integrated Social and Health Care?

- Health care services



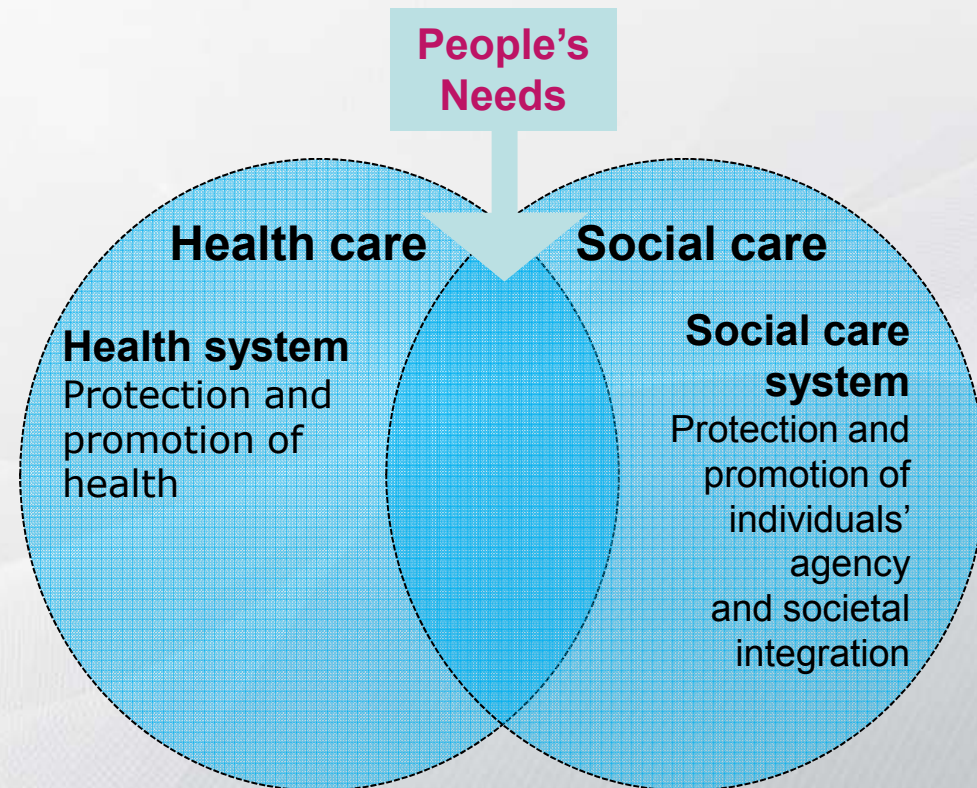
1. Why Coordinated or Integrated Social and Health Care?

- Health care services
- Social care services



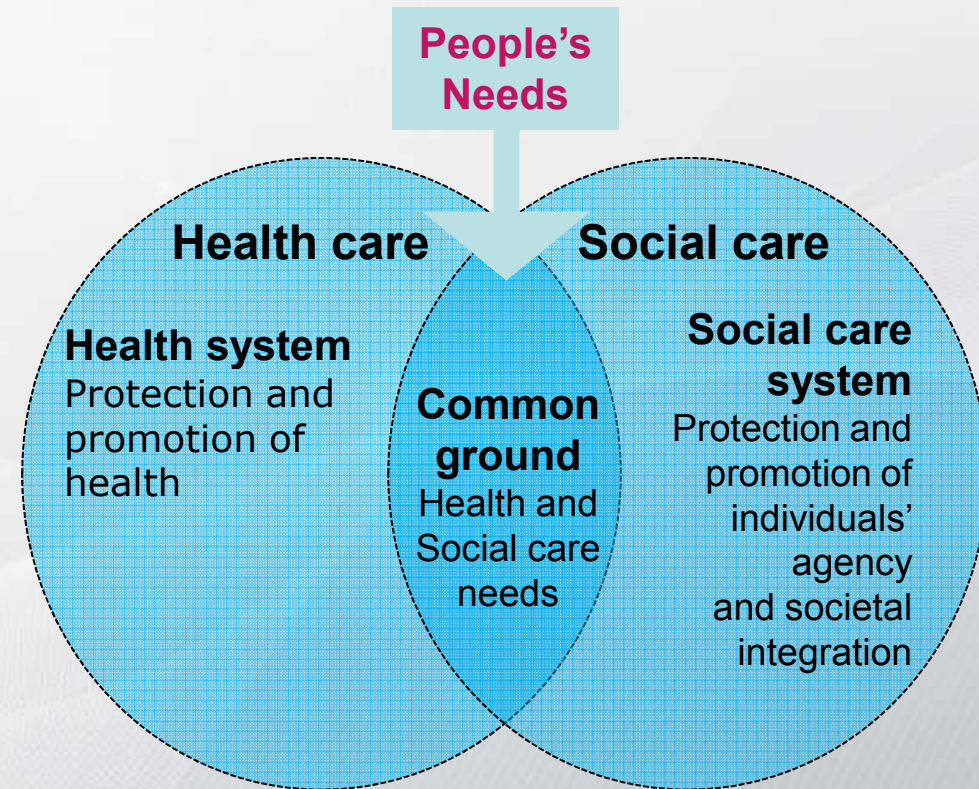
1. Why Coordinated or Integrated Social and Health Care?

- Health care services
- Social care services
- Integrated needs



1. Why Coordinated or Integrated Social and Health Care?

- Health care services
- Social care services
- Integrated needs
- Coordinated or Integrated care

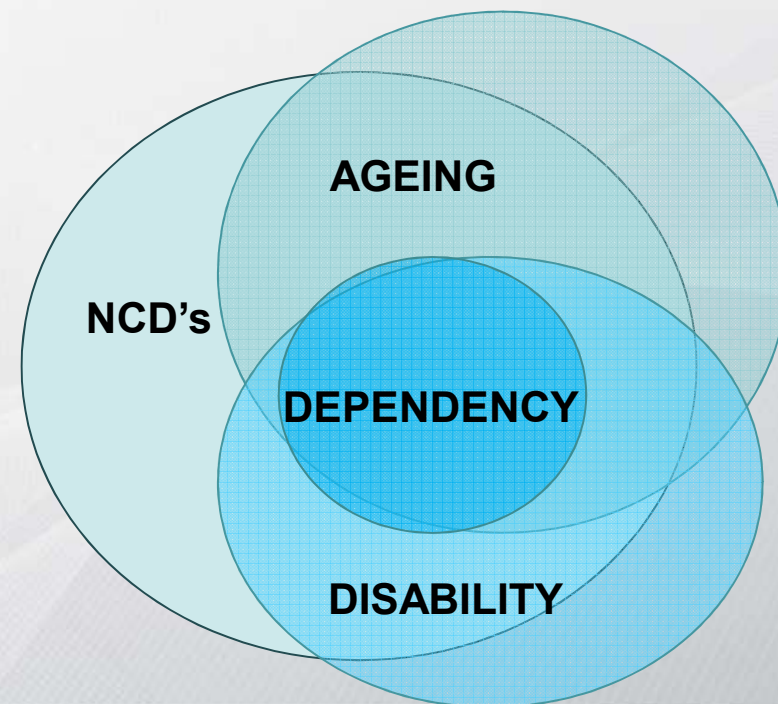


1. Why Coordinated or Integrated Social and Health Care?

- Health care services
- Social care services
- Integrated needs
- Coordinated or Integrated care
- **Caring for people's needs in advanced age, disability, dependency and chronic diseases**

1. Why Coordinated or Integrated Social and Health Care?

- Health care services
- Social care services
- Integrated needs
- Coordinated or Integrated care
- Caring for people's needs in advanced age, disability, dependency and chronic diseases



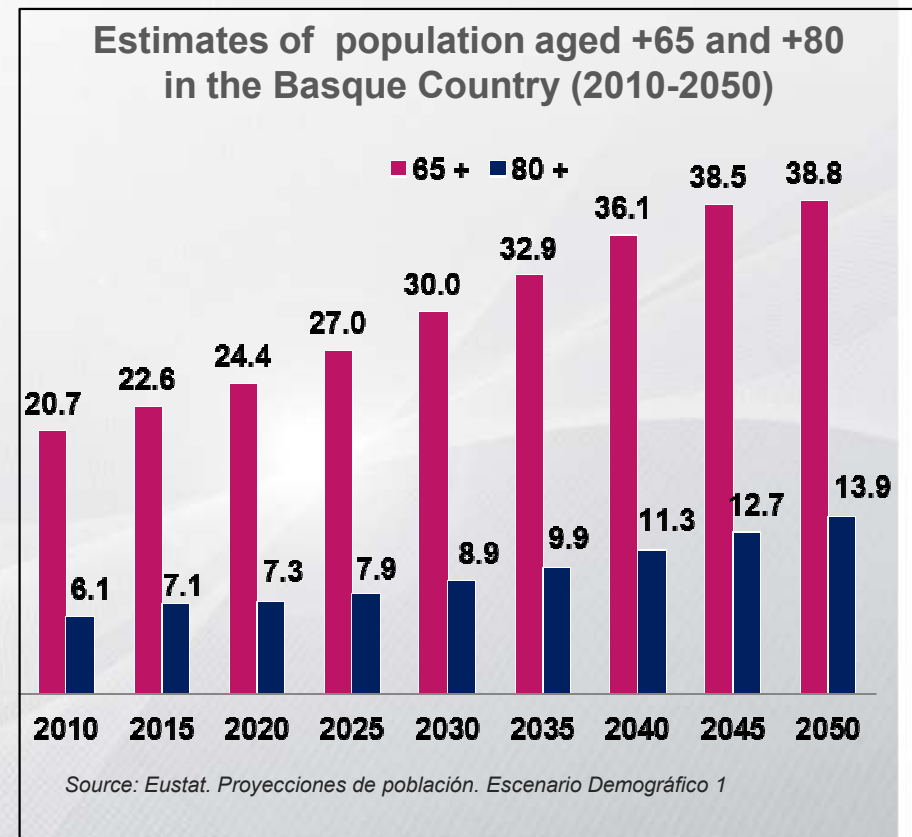
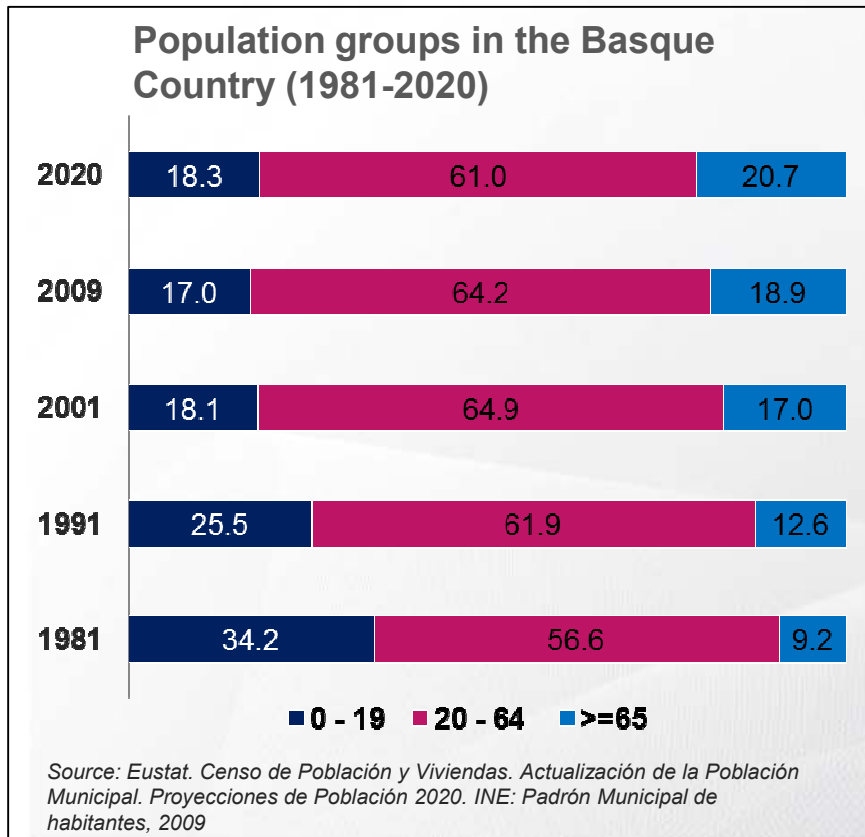


1. Why Coordinated or Integrated Social and Health Care?

(ETORBIZI)

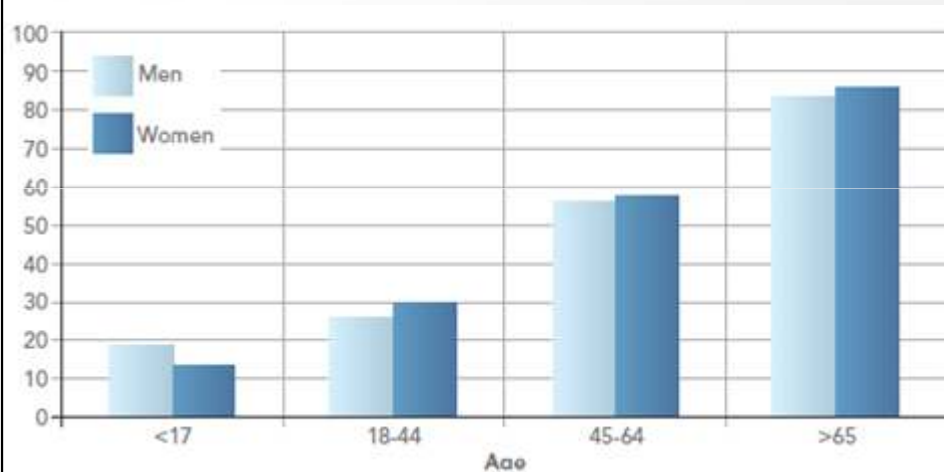
BERRIKUNTZA SOZIOSANITARIORAKO EUSKAL FUNDAZIOA
FUNDACIÓN VASCA PARA LA INNOVACIÓN SOCIOSANITARIA

1. Why Coordinated or Integrated Social and Health Care?



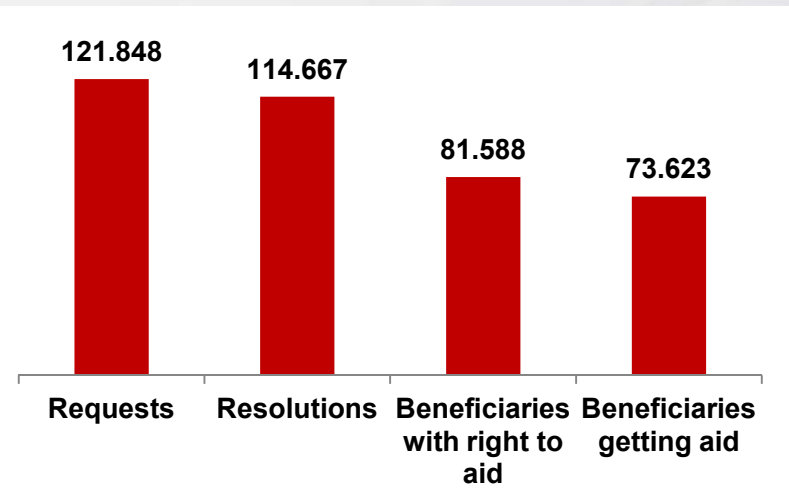
1. Why Coordinated or Integrated Social and Health Care?

Prevalence of chronic problems according to age and sex, Basque Country (2007)



Source: Eustat. ESCAV 2007 as cited in: Gobierno Vasco (2010). *A Strategy to Tackle the Challenge of Chronicity in the Basque Country. estrategia para afrontar el reto de la cronicidad en Euskadi. Vitoria-Gasteiz: Eusko Jaurlaritza-Basque Government, Department of Health and Consumer Affairs., page 7.*

Act on the Promotion of Personal Autonomy and Care for Dependent Persons: Requests, Resolutions and Beneficiaries in the Basque Country (as of 1 June 2012)



Source: SAAD, 1 June 2012.

2. The Basque Model of Coordinated or Integrated Social and Health Care: Key Characteristics

(ETORBIZI)

BERRIKUNTZA SOZIOSANITARIOAKO EUSKAL FUNDAZIOA
FUNDACIÓN VASCA PARA LA INNOVACIÓN SOCIO-SANITARIA

2. The Basque Model of Coordinated or Integrated Social and Health Care: Key Characteristics

- **Autonomy and strengthening of both sectors, especially the least developed (social care)**



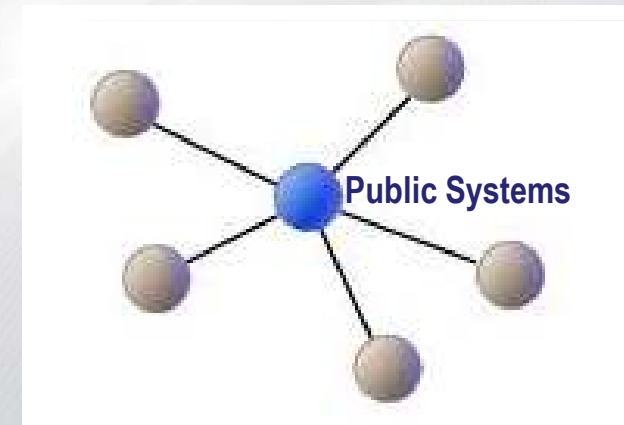
2. The Basque Model of Coordinated or Integrated Social and Health Care: Key Characteristics

- **Autonomy and strengthening of both sectors, especially the least developed (social care)**
- **Symmetry between both sectors**



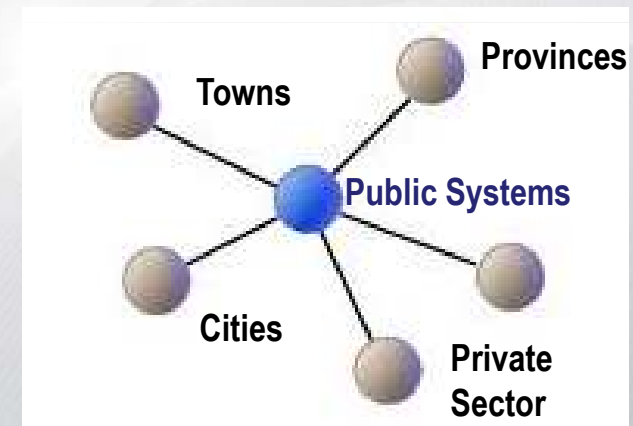
2. The Basque Model of Coordinated or Integrated Social and Health Care: Key Characteristics

- **Autonomy and strengthening of both sectors, especially the least developed (social care)**
- **Symmetry between both sectors**
- **Centrality of public systems (health care and social care) as a means and reference point of Coordinated or Integrated care**



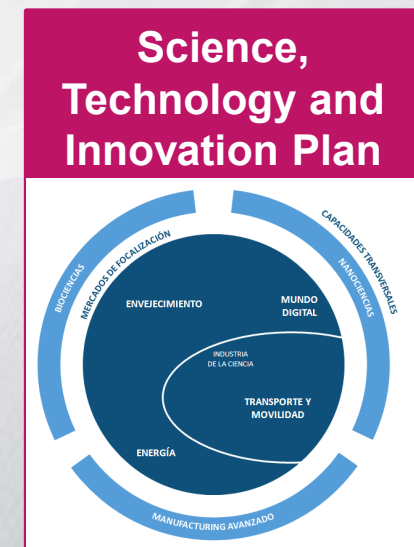
2. The Basque Model of Coordinated or Integrated Social and Health Care: Key Characteristics

- Autonomy and strengthening of both sectors, especially the least developed (social care)
- Symmetry between both sectors
- Centrality of public systems (health care and social care) as a means and reference point of Coordinated or Integrated care
- **Interinstitutional system for social care services (not for health care services)**



2. The Basque Model of Coordinated or Integrated Social and Health Care: Key Characteristics

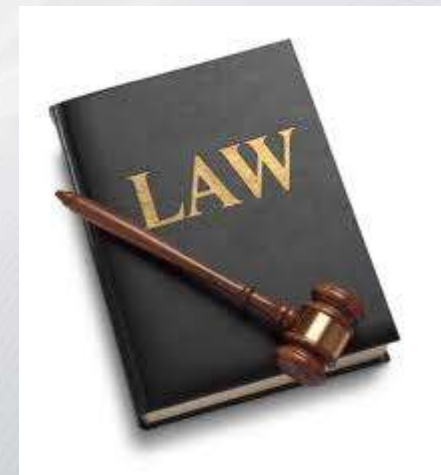
- Autonomy and strengthening of both sectors, especially the least developed (social care)
- Symmetry between both sectors
- Centrality of public systems (health care and social care) as a means and reference point of Coordinated or Integrated care
- Interinstitutional system for social care services (not for health care services)
- **Emerging leadership of the Basque Government in social and health care innovation within the Basque R&D&I Strategy**



3. Governance and Organisation of Coordinated or Integrated Health and Social Care

3. Governance and Organisation of Coordinated or Integrated Health and Social Care

- The Social Care Act (2008) provides social and health care coordination with a legal frame



3. Governance and Organisation of Coordinated or Integrated Health and Social Care

- The Social Care Act (2008) provides social and health care coordination with a legal frame
- **Identification of population groups: including children at risk, persons with mental health problems, palliative care...**



3. Governance and Organisation of Coordinated or Integrated Health and Social Care

- The Social Care Act (2008) provides social and health care coordination with a legal frame
- Identification of population groups: including children at risk, persons with mental health problems, palliative care
- **The Basque Council for Social and Health Care, local councils and commissions**



3. Governance and Organisation of Coordinated or Integrated Health and Social Care

- The Social Care Act (2008) provides social and health care coordination with a legal frame
- Identification of population groups: including children at risk, persons with mental health problems, palliative care
- The Basque Council for Social and Health Care, local councils and commissions
- **Listed health and social care provisions and services**



3. Governance and Organisation of Coordinated or Integrated Health and Social Care

- The Social Care Act (2008) provides social and health care coordination with a legal frame
- Identification of population groups: including children at risk, persons with mental health problems, palliative care
- The Basque Council for Social and Health Care, local councils and commissions
- Listed health and social care provisions and services
- **Joint social and health care units can be potentially set up in any of the two sectors**



3. Governance and Organisation of Coordinated or Integrated Health and Social Care

- The Social Care Act (2008) provides social and health care coordination with a legal frame
- Identification of population groups: including children at risk, persons with mental health problems, palliative care
- The Basque Council for Social and Health Care, local councils and commissions
- Listed health and social care provisions and services
- Joint social and health care unit can be potentially set up in any of the two sectors
- **Co-financing**



4. Coordinated or Integrated Social and Health Care: Case Studies and Management

4. Coordinated or Integrated Social and Health Care: Case Studies and Management

- Experiences on case management and personalised care pathways



Etxean Ondo (Basque Government supported by Matia)



Caring for people with ictus (Aita Menni & Etorbizi)



Co-ordinated plans between health services and local authorities



Telecare for psycho-social support (Aurrerantz & Etorbizi)

4. Coordinated or Integrated Social and Health Care: Case Studies and Management

- Experiences on case management and personalised care pathways
- Experiences of inter-disciplinary and professionally-mixed primary care teams



4. Coordinated or Integrated Social and Health Care: Case Studies and Management

- Experiences on case management and personalised care pathways
- Experiences of inter-disciplinary and professionally-mixed primary care teams
- Fixed protocols to address specific events (e.g., victims of gender-based violence)



4. Coordinated or Integrated Social and Health Care: Case Studies and Management

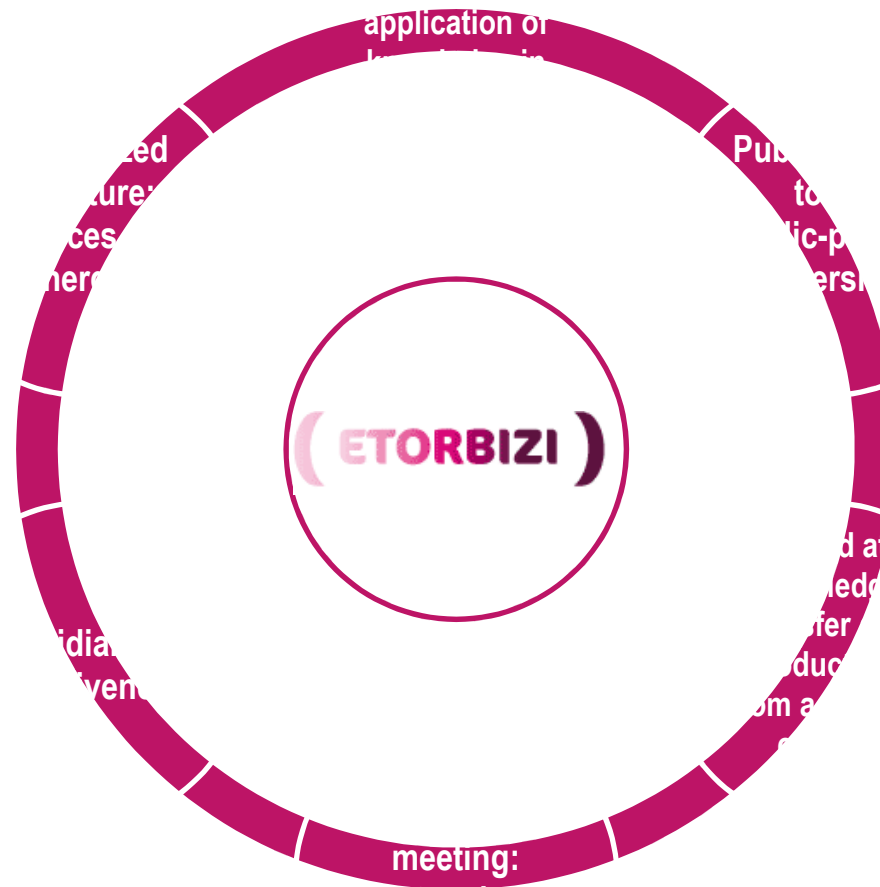
- Experiences on case management and personalised care pathways
- Experiences of inter-disciplinary and professionally-mixed primary care teams
- Fixed protocols to address specific events (e.g., victims of gender-based violence)
- **Telecare for social and health needs**



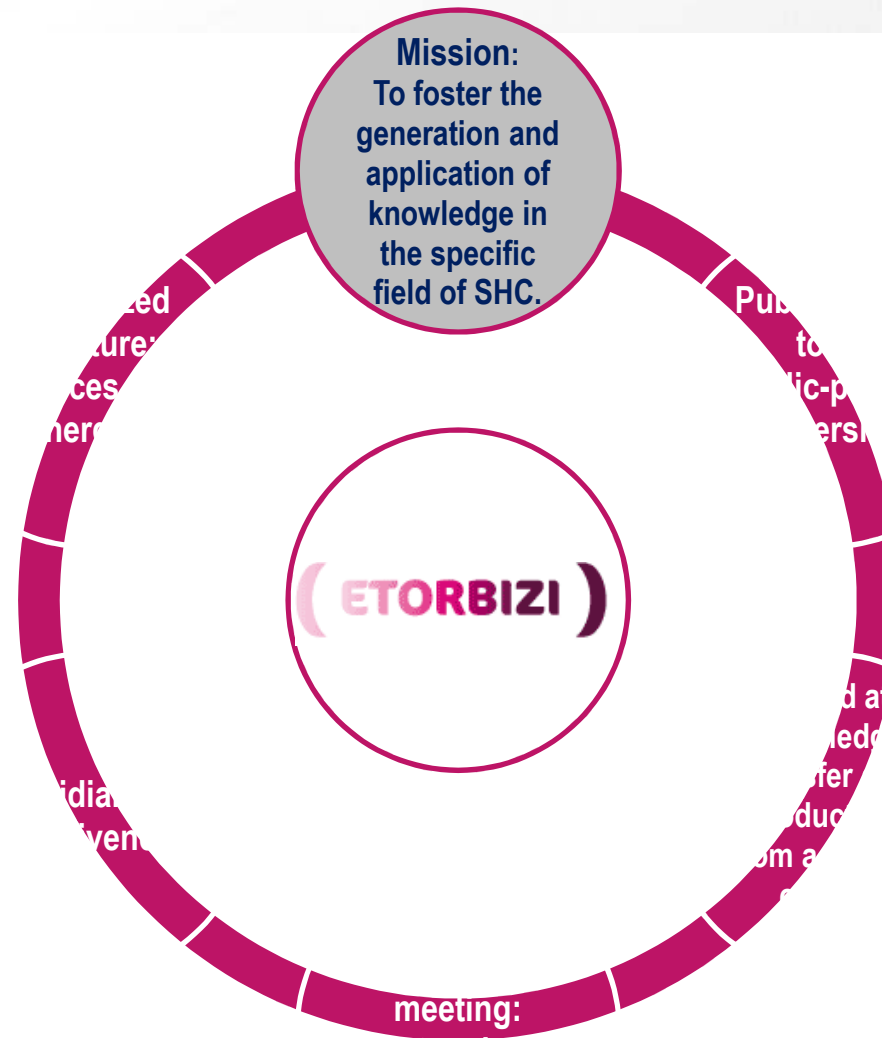
5. Innovation for Social and Health Care: Etorbizi



5. Innovation for Social and Health Care: Etorbizi



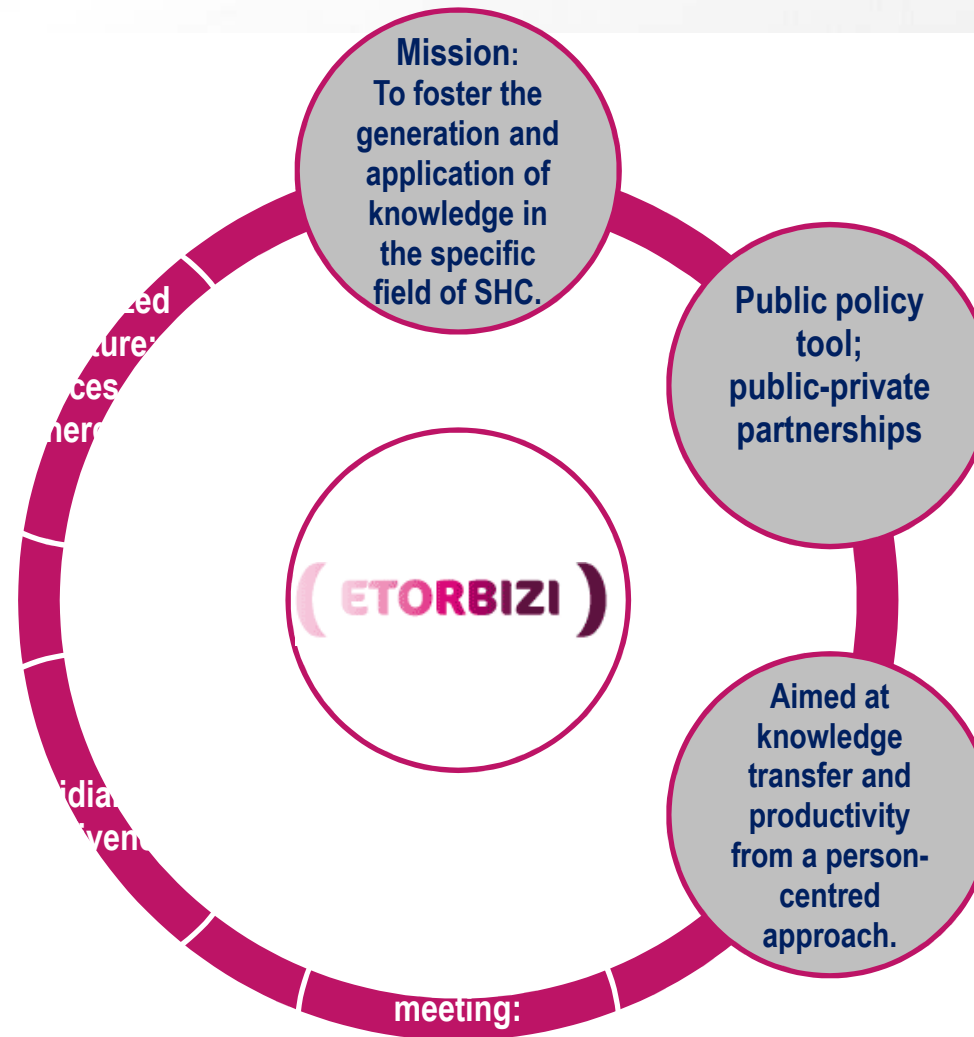
5. Innovation for Social and Health Care: Etorbizi



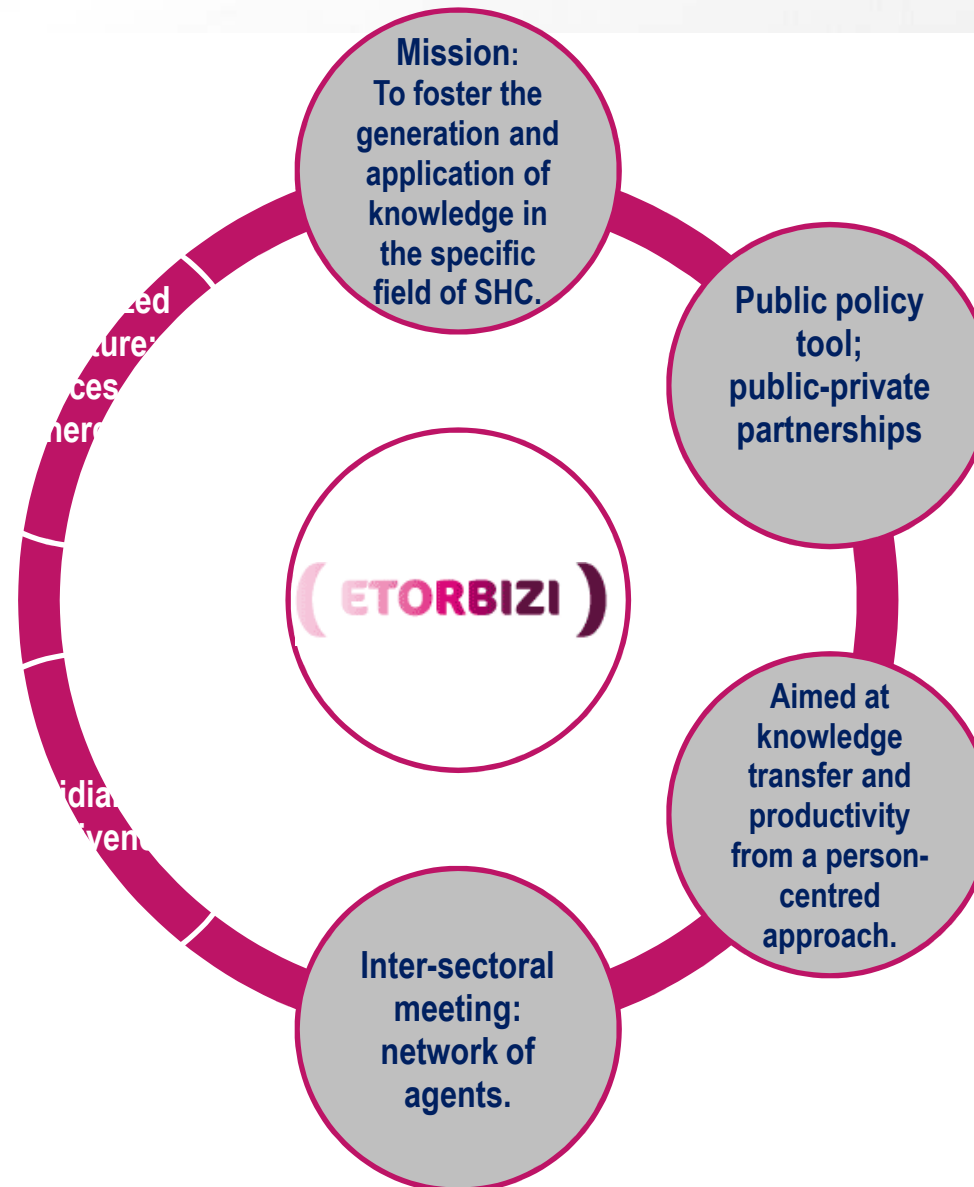
5. Innovation for Social and Health Care: Etorbizi



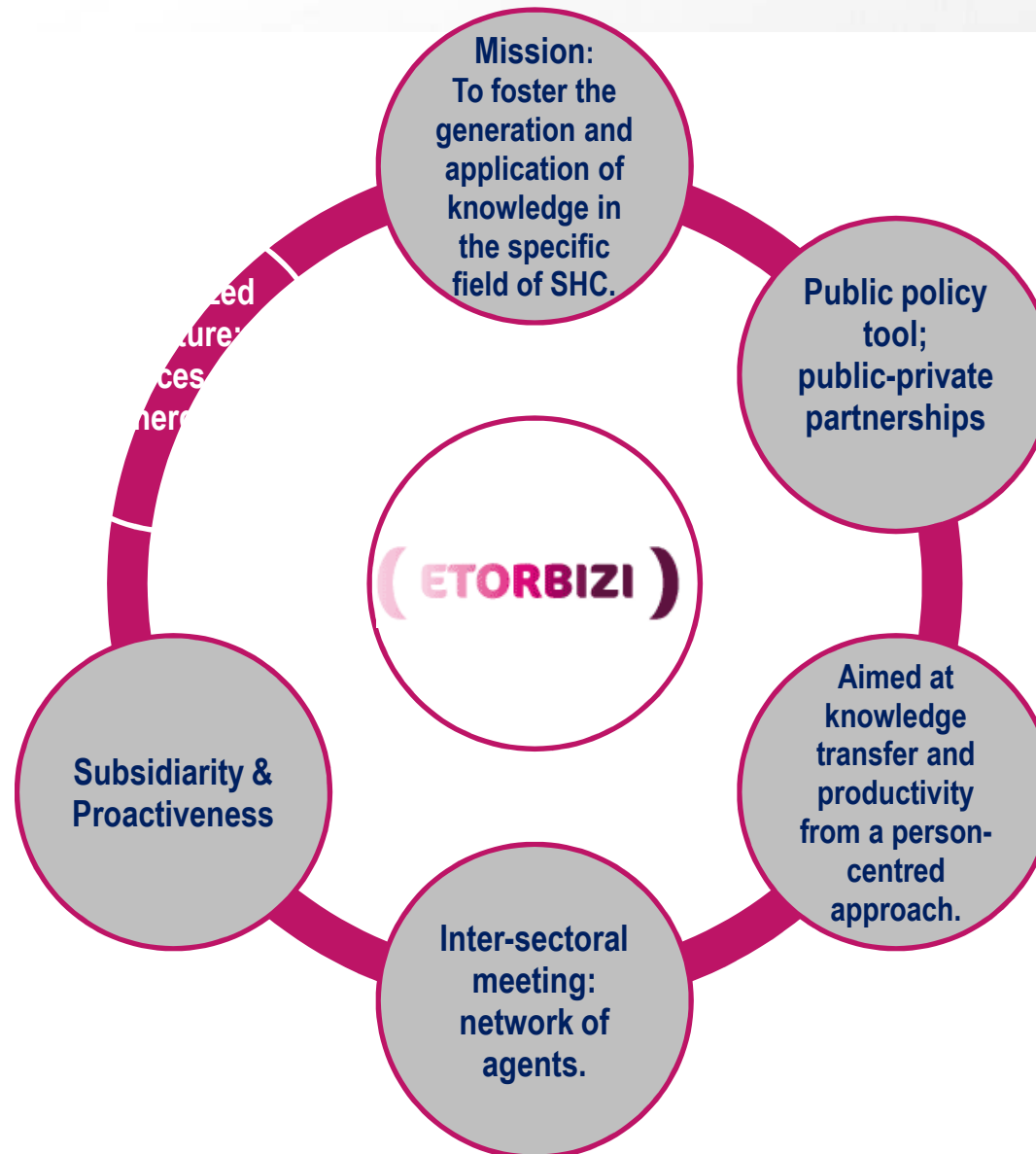
5. Innovation for Social and Health Care: Etorbizi



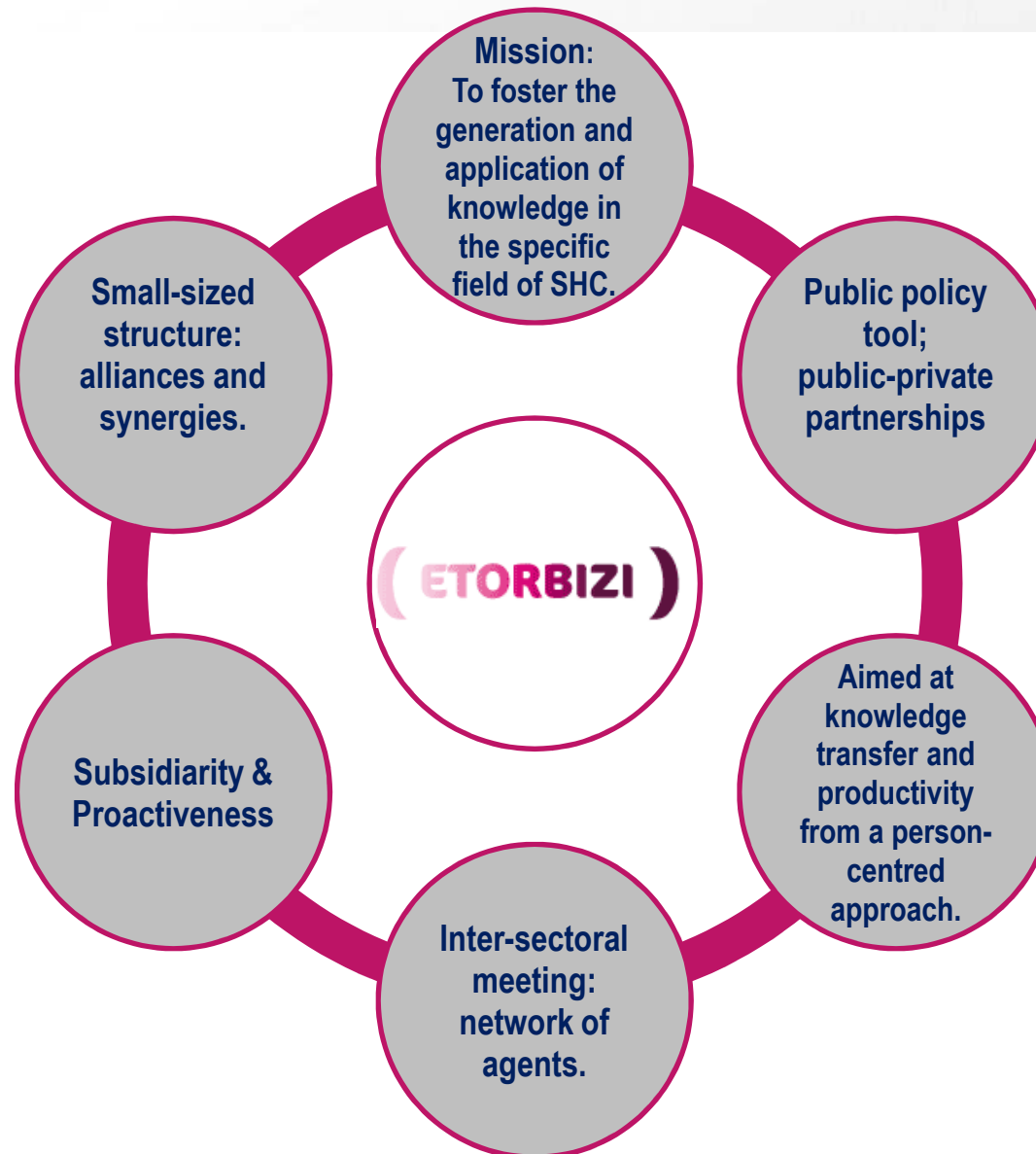
5. Innovation for Social and Health Care: Etorbizi



5. Innovation for Social and Health Care: Etorbizi



5. Innovation for Social and Health Care: Etorbizi



6. Future Perspectives

(ETORBIZI)

BERRIKUNTZA SOZIOSANITARIORAKO EUSKAL FUNDAZIOA
FUNDACIÓN VASCA PARA LA INNOVACIÓN SOCIO-SANITARIA

6. Future Perspectives

Preventive, home-based and community-based approaches

6. Future Perspectives

Preventive, home-based and community-based approaches

Management of diversity

6. Future Perspectives

Preventive, home-based and community-based approaches

Management of diversity

Integrative assessment tools

6. Future Perspectives

Preventive, home-based and community-based approaches

Management of diversity

Integrative assessment tools

Management of information and records on treatments/services

6. Future Perspectives

Preventive, home-based and community-based approaches

Management of diversity

Integrative assessment tools

Management of information and records on treatments/services

Versatility of human capital: awareness-raising and training

6. Future Perspectives

Preventive, home-based and community-based approaches

Management of diversity

Integrative assessment tools

Management of information and records on treatments/services

Versatility of human capital: awareness-raising and training

Further development of the Basque Social Care System (and adjustment of the Health Care System)

6. Future Perspectives

Preventive, home-based and community-based approaches

Management of diversity

Integrative assessment tools

Management of information and records on treatments/services

Versatility of human capital: awareness-raising and training

Further development of the Basque Social Care System (and reengineering of the Health Care System)

Inclusive, design-for-all ICT's, domotics, transport...

6. Future Perspectives

Preventive, home-based and community-based approaches

Management of diversity

Integrative assessment tools

Management of information and records on treatments/services

Versatility of human capital: awareness-raising and training

Further development of the Basque Social Care System (and adjustment of the Health Care System)

Inclusive, design-for-all ICT's, domotics, transport...

Strengthening and articulating the network...
Convergence in zoning

6. Future Perspectives

Preventive, home-based and community-based approaches

Management of diversity

Integrative assessment tools

Management of information and records on treatments/services

Versatility of human capital: awareness-raising and training

Further development of the Basque Social Care System (and adjustment of the Health Care System)

Inclusive, design-for-all ICT's, domotics, transport...

Strengthening and articulating the network...
Convergence in zoning

Organisational, Social, Political and Economical Innovation



Thank you.

fernando@fantova.net

(ETORBIZI)

BERRIKUNTZA SOZIOSANITARIORAKO EUSKAL FUNDAZIOA
FUNDACIÓN VASCA PARA LA INNOVACIÓN SOCIOSANITARIA